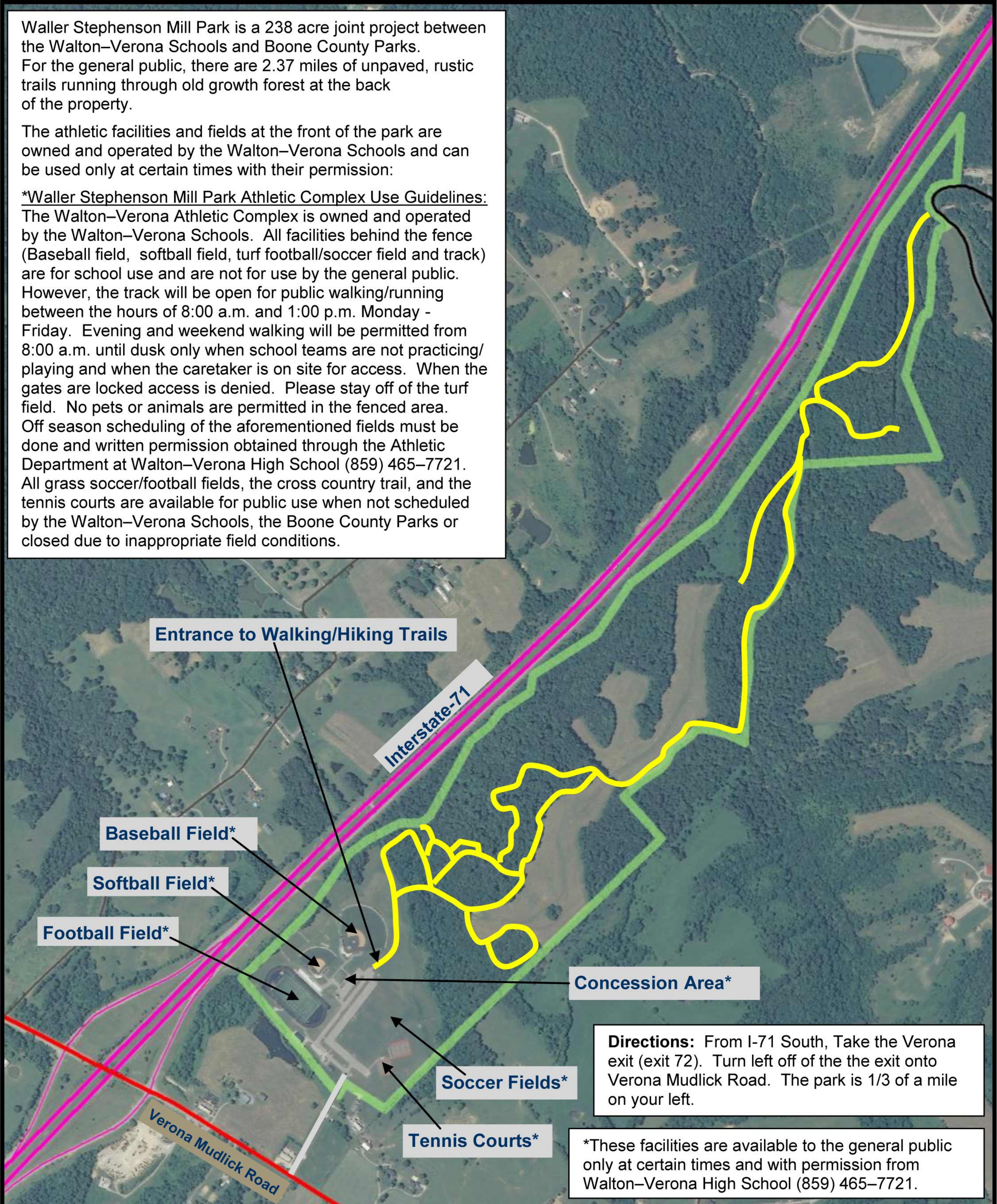


Waller Stephenson Mill Park is a 238 acre joint project between the Walton–Verona Schools and Boone County Parks. For the general public, there are 2.37 miles of unpaved, rustic trails running through old growth forest at the back of the property.

The athletic facilities and fields at the front of the park are owned and operated by the Walton–Verona Schools and can be used only at certain times with their permission:

\*Waller Stephenson Mill Park Athletic Complex Use Guidelines:  
The Walton–Verona Athletic Complex is owned and operated by the Walton–Verona Schools. All facilities behind the fence (Baseball field, softball field, turf football/soccer field and track) are for school use and are not for use by the general public. However, the track will be open for public walking/running between the hours of 8:00 a.m. and 1:00 p.m. Monday - Friday. Evening and weekend walking will be permitted from 8:00 a.m. until dusk only when school teams are not practicing/playing and when the caretaker is on site for access. When the gates are locked access is denied. Please stay off of the turf field. No pets or animals are permitted in the fenced area. Off season scheduling of the aforementioned fields must be done and written permission obtained through the Athletic Department at Walton–Verona High School (859) 465–7721. All grass soccer/football fields, the cross country trail, and the tennis courts are available for public use when not scheduled by the Walton–Verona Schools, the Boone County Parks or closed due to inappropriate field conditions.



Entrance to Walking/Hiking Trails

Interstate-71

Baseball Field\*

Softball Field\*

Football Field\*

Concession Area\*

Soccer Fields\*

Tennis Courts\*

Verona Mudlick Road

**Directions:** From I-71 South, Take the Verona exit (exit 72). Turn left off of the the exit onto Verona Mudlick Road. The park is 1/3 of a mile on your left.

\*These facilities are available to the general public only at certain times and with permission from Walton–Verona High School (859) 465–7721.



# Waller-Stephenson Mill Park

Verona Mudlick Road, Verona, KY 41092

**Boone County Parks & Recreation** 859-334-2117



North