

# BOONE COUNTY BUILDING DEPARTMENT

## DECK SPECIFICATIONS

DECK DIMENSIONS: \_\_\_\_\_

FOOTING SIZE AND DEPTH: \_\_\_\_\_

HEIGHT OF DECK FROM GROUND LEVEL: \_\_\_\_\_ FT.

SIZE OF POSTS: \_\_\_\_\_ SPACING: \_\_\_\_\_

SIZE OF BEAMS: \_\_\_\_\_

JOIST SIZE: \_\_\_\_\_ AND \_\_\_\_\_ INCHES ON CENTER

JOIST SPAN: \_\_\_\_\_ FT.

SIZE OF DECKING: \_\_\_\_\_

METHOD OF ATTACHMENT TO HOUSE: \_\_\_\_\_

GUARDRAIL HEIGHT: \_\_\_\_\_

WIDTH BETWEEN GUARDS: \_\_\_\_\_

WIDTH OF STAIRWAY TREADS: \_\_\_\_\_

HEIGHT OF STAIRWAY RISERS: \_\_\_\_\_

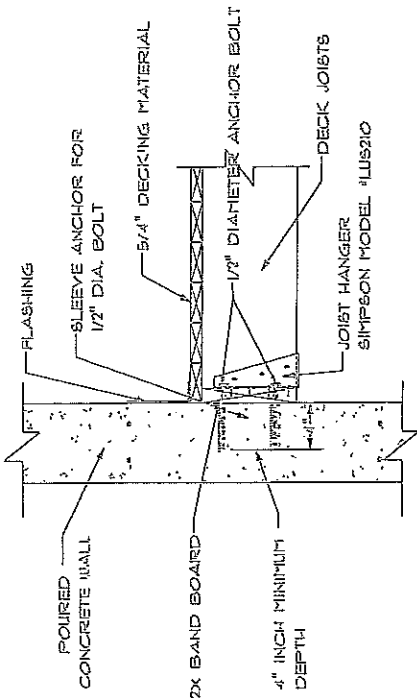
**NOTES:**

- COLUMNS AND POSTS SHALL BE AT LEAST 30" BELOW GRADE FOR ALL DECKS ATTACHED TO HOUSE
- DECKS MORE THAN 4 FT. OFF THE GROUND SHALL HAVE 4X6 OR 6X6 COLUMNS.
- FOOTERS ARE NOT REQUIRED FOR FREESTANDING DECKS LESS THAN 30 INCHES OFF THE GROUND WHEN ATTACHED TO CONCRETE PEDESTAL; DECK MUST BE TIED DOWN DIAGONALLY TO PEDESTALS
- A 36" GUARDRAIL SHALL BE INSTALLED AROUND ALL PARTS OF DECK 30" ABOVE GRADE.
- STAIRS SHALL HAVE HANDRAILS AND GUARDS. HANDRAILS SHALL BE GRASPABLE AND SHALL HAVE A MAXIMUM DIAMETER OF 2-5/8". HANDRAILS SHALL RETURN TO WALL OR POST AT BOTH ENDS OF STAIRWAY
- STAIR TREADS SHALL BE A MINIMUM OF 9 INCHES IN WIDTH.
- RISERS SHALL BE A MAXIMUM OF 8.25 INCHES IN HEIGHT AND MUST BE ENCLOSED TO WITH NO GREATER THAN 4 INCH OPENING.
- ALL GUARDS SHALL BE SPACED NO MORE THAN 4" APART.
- BEAMS SHALL BE BOLTED TO POSTS WITH 1/2" CARRIAGE BOLTS
- ALL MATERIAL IS TO BE TREATED LUMBER.
- SCREWS ARE NOT APPROVED FOR FLOOR JOIST HANGERS.
- CLEARLY SHOW LOCATION OF TIE IN TO EXISTING HOUSE ON PLANS
- ATTACHMENT TO BAY AREAS OR FIREPLACES IS PROHIBITED
- ATTACHMENT TO HOUSE OVERHANG OR CANTILEVER IS PROHIBITED
- ATTACHMENT TO BRICK, MASONRY, STONE OR EXTERIOR VENEERS IS PROHIBITED
- 

APPLICANT: \_\_\_\_\_ DATE: \_\_\_\_\_

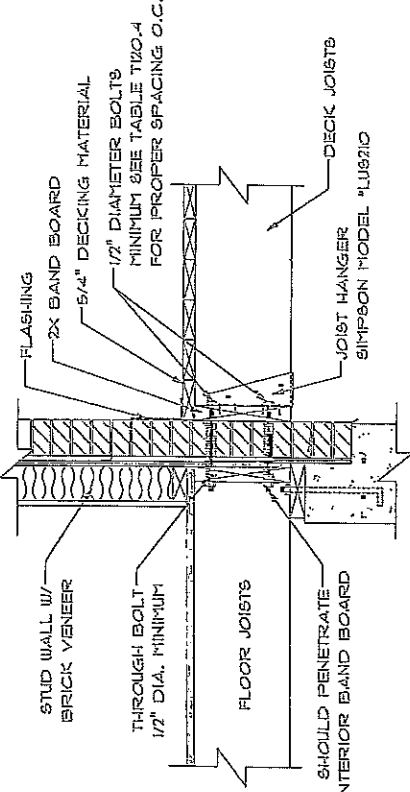
PERMIT # \_\_\_\_\_

# DECK ATTACHMENT DETAILS



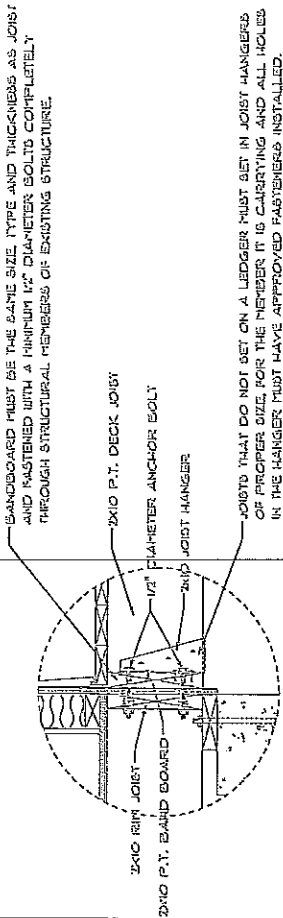
## CONCRETE

NOTE: INSTEAD OF BOLTING THROUGH CONCRETE WALL YOU MAY ATTACH BANDBOARD BY A SLEEVE ANCHOR WITH A MINIMUM OF A 1/2" INCH DIAMETER BOLT AND SET A MINIMUM OF 4" INCHES INTO CONCRETE WALL.



## BRICK VENEER

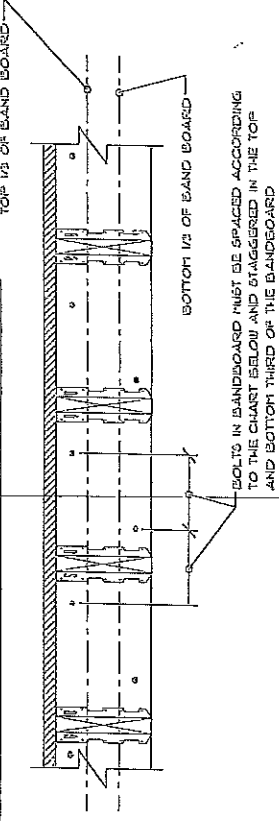
# DECK BANDBOARD DETAIL



JOIST SIZE	FACE HANGER MODELS PERMITTED
2x6 JOISTS	LUS26 LUC26Z HUS26
2x8 JOISTS	LUS28 LUC28Z HUS28
2x10 JOISTS	LUS30 LUC30Z HUS30
2x12 JOISTS	LUS32 LUC32Z HUS32

NOTE: ALL DECK FASTENERS AND FLASHING TO BE OF CORROSION RESISTANT MATERIAL COMPATIBLE WITH THE TREATED WOOD MATERIAL SUPPLIED.

JOIST SPAN	BOLT SIZE AND SPACING (ON CENTER)
10'-0" OR LESS	1/2" DIAMETER BOLTS SPACED @ 2'-0"
10'-0" TO 15'-0"	1/2" DIAMETER BOLTS SPACED @ 1'-4"
15'-0" TO 30'-0"	1/2" DIAMETER BOLTS SPACED @ 2'-0"
	7/8" DIAMETER BOLTS SPACED @ 1'-6"



# DECK BANDBOARD BOLT SPACING