

WHO CARES ABOUT LITTER?

Taxpayers care about litter.

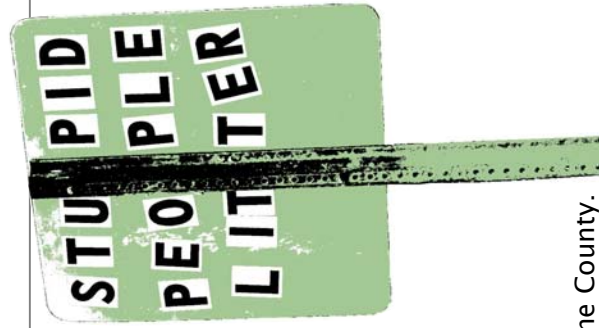
\$220,086.63

of your tax dollars were spent cleaning up litter by Boone County, Florence and Walton governments in 2006.

About \$14 million

of your tax dollars were spent cleaning up litter across Kentucky in 2005.

That's plus **countless** hours and supplies donated by volunteers who work to help keep our communities clean.



**Boone County Public Works,
Division of Solid Waste Management**
5645 Idlewild Road
Burlington, KY 41005

This sign was made by a concerned resident in rural Boone County.

Boone County Solid Waste Management
A Division of Boone County Public Works



LITTER



An ugly habit.

DOES LITTER HAVE A REAL **IMPACT?**

The Urban Litter Forum,* a partnership between the U.S. Conference of Mayors and Keep America Beautiful, identified the following impacts of litter:

Litter **repels** economic development, investment, and location of businesses.

It **decreases** property values and increases urban decay.

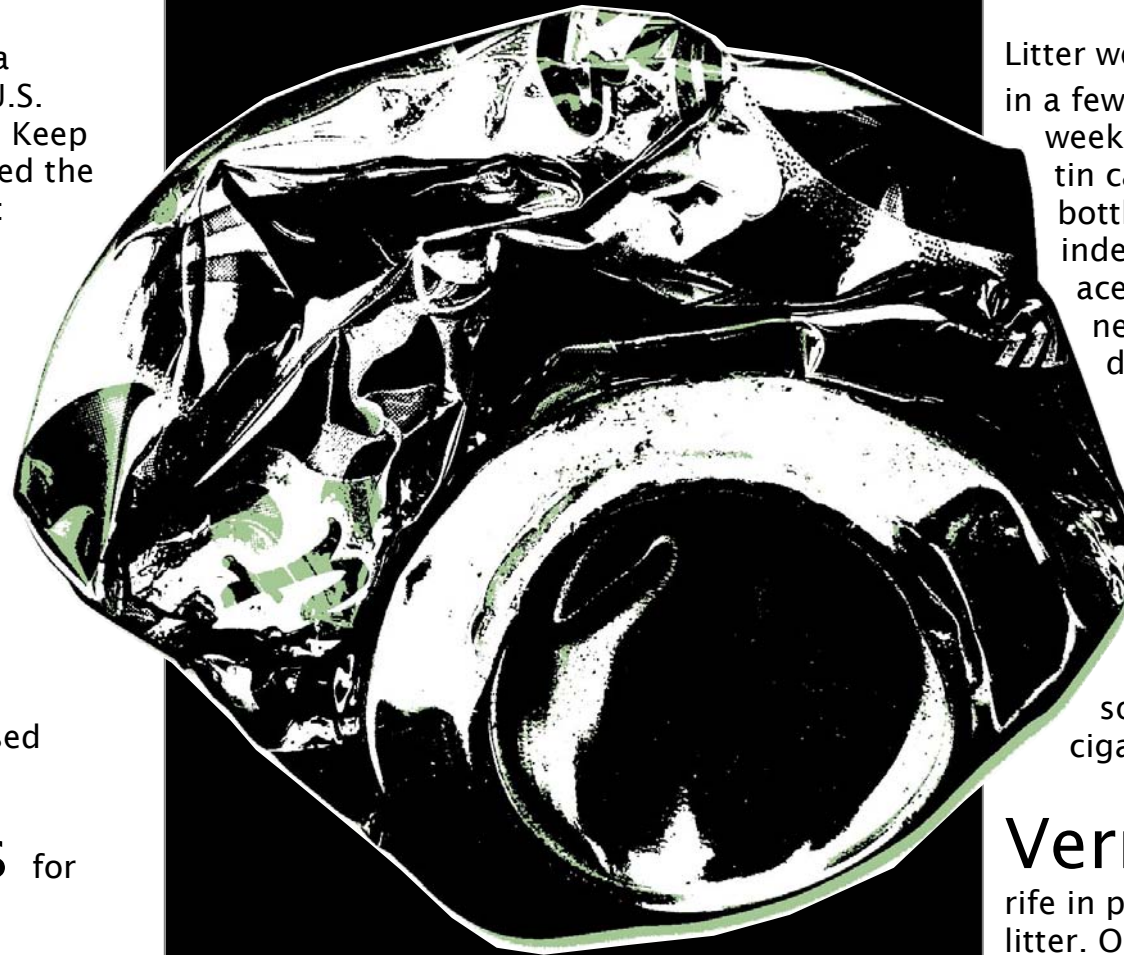
Urban **blight** and litter result in decreased tourism in communities.

Revenue **declines** for littered business districts.

Related **crime** activities are more likely to occur in blighted areas (drug deals, prostitution, gang violence, loitering, vandalism, etc.).

*The Urban Litter Forum
Hollywood, Florida January 11-12, 1999

YOU CAN HELP



Never litter.

Store trash in bags or pockets until you find a garbage can.

Have the courage to talk to people about not littering.

Volunteer to clean up litter.

DID YOU **KNOW?**

Litter won't just **go away** in a few days. Paper takes 2-4 weeks to break down, while a tin can lasts 100 years, a glass bottle will hang around indefinitely and the cellulose acetate in cigarette filters never completely decomposes.

It is **illegal** to litter. Boone County Sheriffs have committed to ticketing people who throw their trash on the ground, even if it is something small like a cigarette butt.

Vermin and disease are rife in places with high amounts of litter. Open containers such as paper cups or beverage cans can hold rainwater, providing breeding locations for mosquitoes which have been known to spread diseases like the West Nile Virus. Litter is also a road hazard, occasionally contributing to automobile accidents.*

*Wikipedia